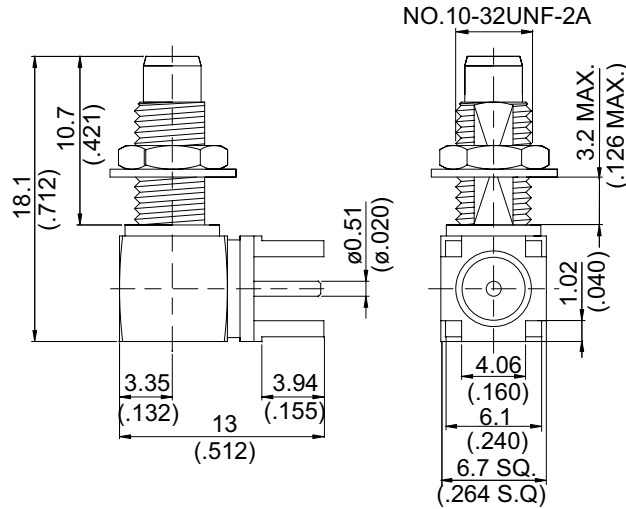


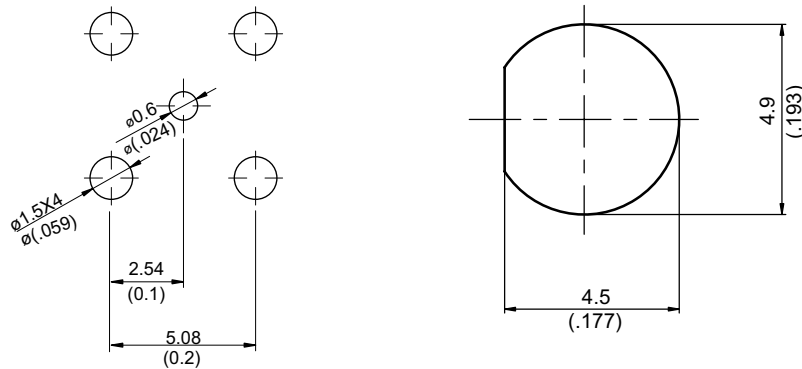
SMC8475A-9000

SMC Jack PCB Mount Right Angle
With Round Contact ($\Phi 0.51$); 2.5GHz VSWR 1.2

75 Ω



MOUNTING HOLE



Parts	Material	Plating (Micro-inch)
Hex Nut	Brass	Gold 4 Over Nickel-Phosphorus Alloy 80 Over Copper 20
Lock Washer	Brass	Gold 4 Over Nickel-Phosphorus Alloy 80 Over Copper 20
Cover	Brass	Gold 4 Over Nickel-Phosphorus Alloy 80 Over Copper 20
Contact Pin	Brass	Gold 4 Over Nickel-Phosphorus Alloy 80 Over Copper 20
Insulator	Teflon	
Body	Brass	Gold 4 Over Nickel-Phosphorus Alloy 80 Over Copper 20

This part number complies with RoHS.

Notice: JYEBAO reserves the right to make modifications deemed appropriate.

SMC	SMC8475A-9000
Electrical Data	
Impedance	75Ω
Frequency range	DC to 2.5GHz
VSWR	≤ 1.2 (DC to 2.5GHz)
Insertion loss	≤ 0.1 x √f(GHz)dB
Insulation resistance	≥ 10000MΩ
Contact resistance inner conductor	≤ 5mΩ
Contact resistance outer conductor	≤ 2.5mΩ
Dielectric withstanding voltage (at sea level)	750 V rms
Working voltage (at sea level)	250 V rms
Mechanical Data	
Recommended coupling nut torque	2.2 to 3.1 inch lbs
Coupling proof torque	6.2 inch lbs
Contact captivation-axial	≥ 2.25 lbs
Durability (mating)	≥ 500
Environmental Data	
Temperature range	-65°C to +165°C
Thermal shock	MIL-STD-202, Method 107, Condition B
Moisture resistance	MIL-STD-202, Method 106
Corrosion	MIL-STD-202, Method 101, Condition B
RoHS	Compliant
Tooling	

Notice: JYEBAO reserves the right to make modifications deemed appropriate.

SMC8475A-9000

S11

